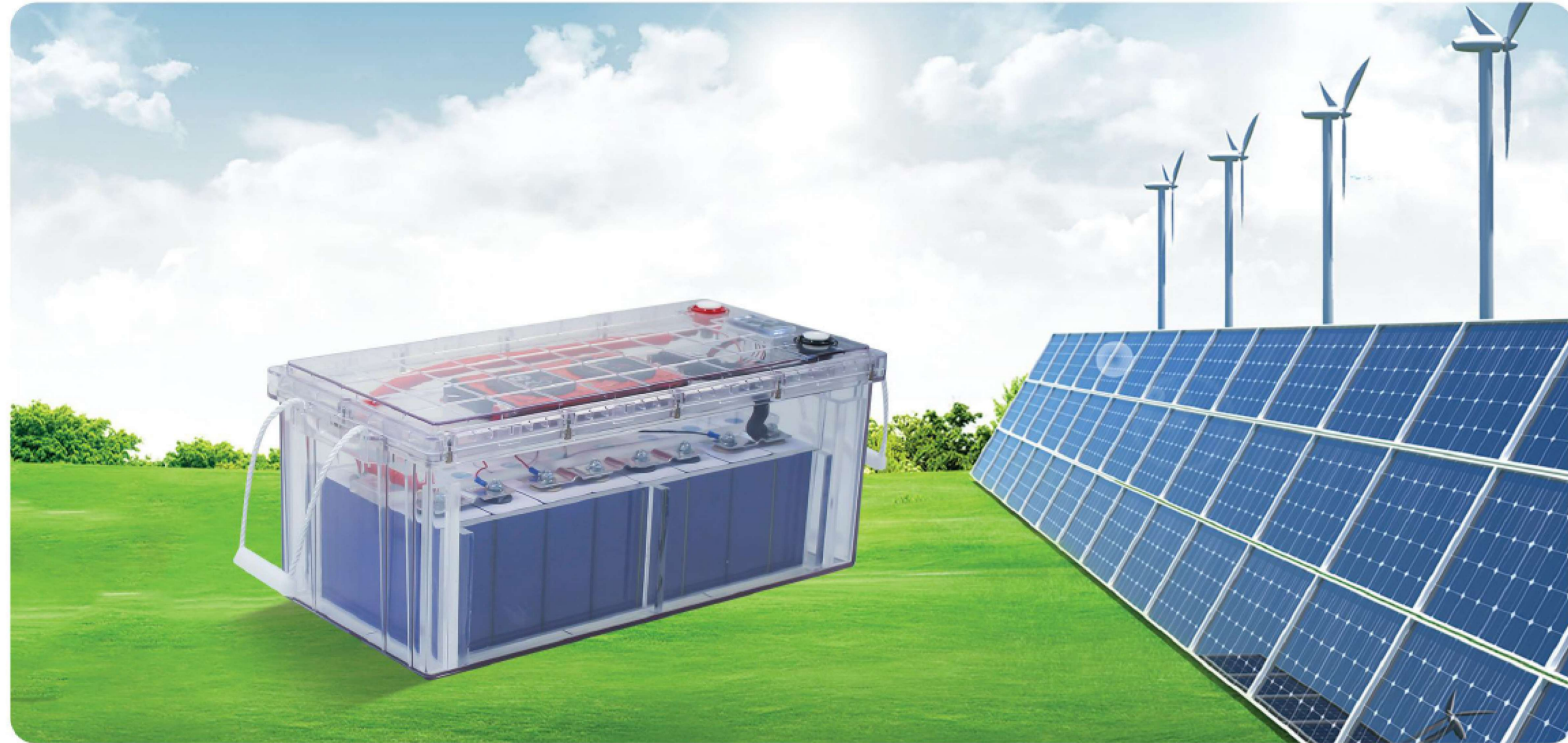


# 25.6V ENERGY STORAGE LIFEPO4 BATTERY (TRANSPARENT CASE)

## 25.6V 储能磷酸铁锂电池(透明壳)



### 产品优势/Product Advantages

- 内置动力型磷酸铁锂电池。容量大，循环寿命长，安全性高，绿色环保
- 智能通讯
- 外观时尚
- Built-in LiFePO4 Battery cells. Large capacity, long cycle life, high safety, environmental protection
- Intelligent communication
- Fashionable appearance

## 技术参数 Technical Parameter

产品型号 Product Model	SR-12200	SR-12300
标称电压 Nominal voltage	12.8V	
标称容量 Nominal capacity	200Ah/2560Wh	300Ah/3840Wh
电芯类型 Cell type	磷酸铁锂(LiFePO <sub>4</sub> )	
组合方式 Composition	4S2P	4S2P
充电截止电压 Charging cutoff voltage	14.6V	
放电截止电压 Discharge Cut-off Voltage	10V	
最大持续放电电流 Maximum continuous discharge current	150A	150A
瞬间放电电流 Instantaneous discharge current	300A	300A
显示屏 Display	LCD	
标准充电电流 Standard charging current	< 75A	< 75A
标准放电电流 Standard discharge current	150A	150A
充电适合温度 Charge suitable temperature	0°C~45°C	
放电适合温度 Discharge suitable temperature	-20°C~65°C	
电池组尺寸 Battery pack size	525*243*226mm	
包装尺寸 Package size	590*305*295mm	
电池组净重 Net weight of battery pack	23Kg	28Kg
电池组毛重 Gross weight of battery pack	24Kg	29Kg
通讯方式 Communication method	蓝牙 RS485 RS232 CAN (可添加) Bluetooth RS485 RS232 CAN (can be added)	
冷却方式 Cooling method	自然冷却 Natural cooling	
运输分类 Transport classification	UN38.3/MSDS/海运/空运 UN38.3/MSDS/Sea/Air	
电池保护功能 Battery protection function	过流、过压、过充、过放、短路等 Overcurrent, overvoltage, overcharging, overdischarge, short circuit, etc	